

# MOWE

## Chemical Injection Flowmeter (IRCD) Skid



*An ISO 9000, 18000, 14000, BIZ SAFE & SME 1000 company.*

# CHEMICAL INJECTION SYSTEM (CI) REFERENCES

## **PETRONAS KINABALU** **FLOWMETER SKID - AQ6800C**



## CI KINABALU

### FLOWMETER SKID - AQ6800C

This Chemical Injection Flowmeter Skid, Injection Rate Control Device (IRCD), is the smallest of the 3 skids but is probably also the most demanding of the 3 packages.

#### MAJOR COMPONENTS

- 6 POSITIVE DISPLACEMENT FLOWMETERS
  - Flow rate at 1.3LpH
- SYSTEM OPERATES AT 750 BAR
- 6 IRCDs (INJECTION RATE CONTROL DEVICE)
  - To regulate flow between 0.7LPH to 2LPH approximately
- VALVES AND FITTINGS
- HIGH PRESSURE FILTER

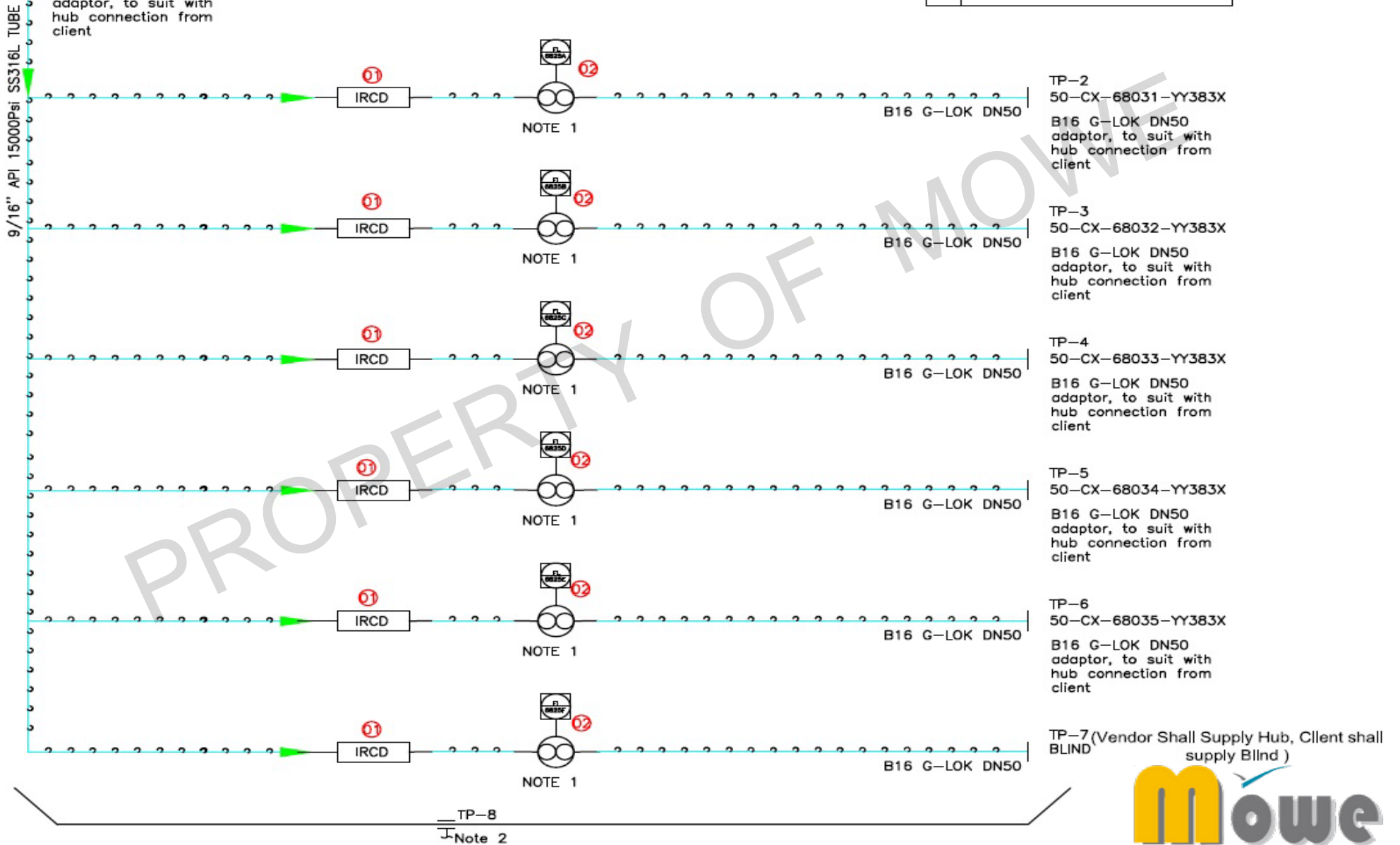


# PNID – AQ6800C

ITEM	DESCRIPTION
01	IRCD
02	PD-Flow Meter

50-CX-68048-YY383X

TP-1  
DN50 G-LOK, B16  
adaptor, to suit with  
hub connection from  
client



Local Niche .....Global Reach.....

# CI KINABALU

## FLOWMETER SKID - AQ6800C ( 1 / 2 )

- Rotary Piston/ Oscillating Piston type flow meter with a single moving part provides robust and low maintenance technology.
- Suitable for low & high viscosity liquids at pressure rating up to 4,000 bar (60,000 psi).
- Available materials of construction: 316L, Duplex F51(UNS S31803), Super Duplex F53(UNS S32750)/F55(UNS S32760). 6Mo F44(UNS S31254) & Titanium.
- Connections: NPT, Autoclave, ANSI flanges, Grayloc Hubs, Galperti Hubs, Techlok hubs etc
- Communications: 4-20mA HART, Pulse, MODBUS, Foundation Field bus. Dependent on electronics and certification requirements.
- Temperature rating: -40 °C - 100 °C with remote mounted electronics. For direct mount versions see next page. Higher temperature special versions available on request.
- A 40 micron filter or less is recommended.

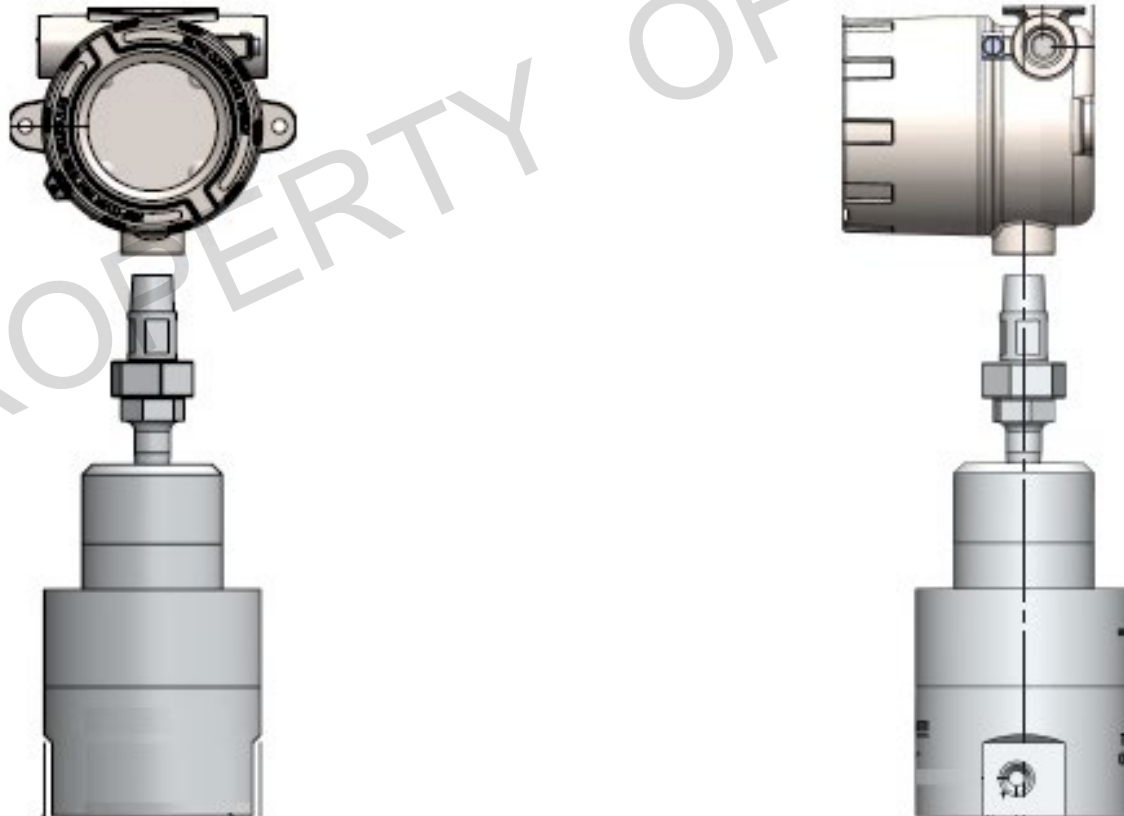


## CI KINABALU

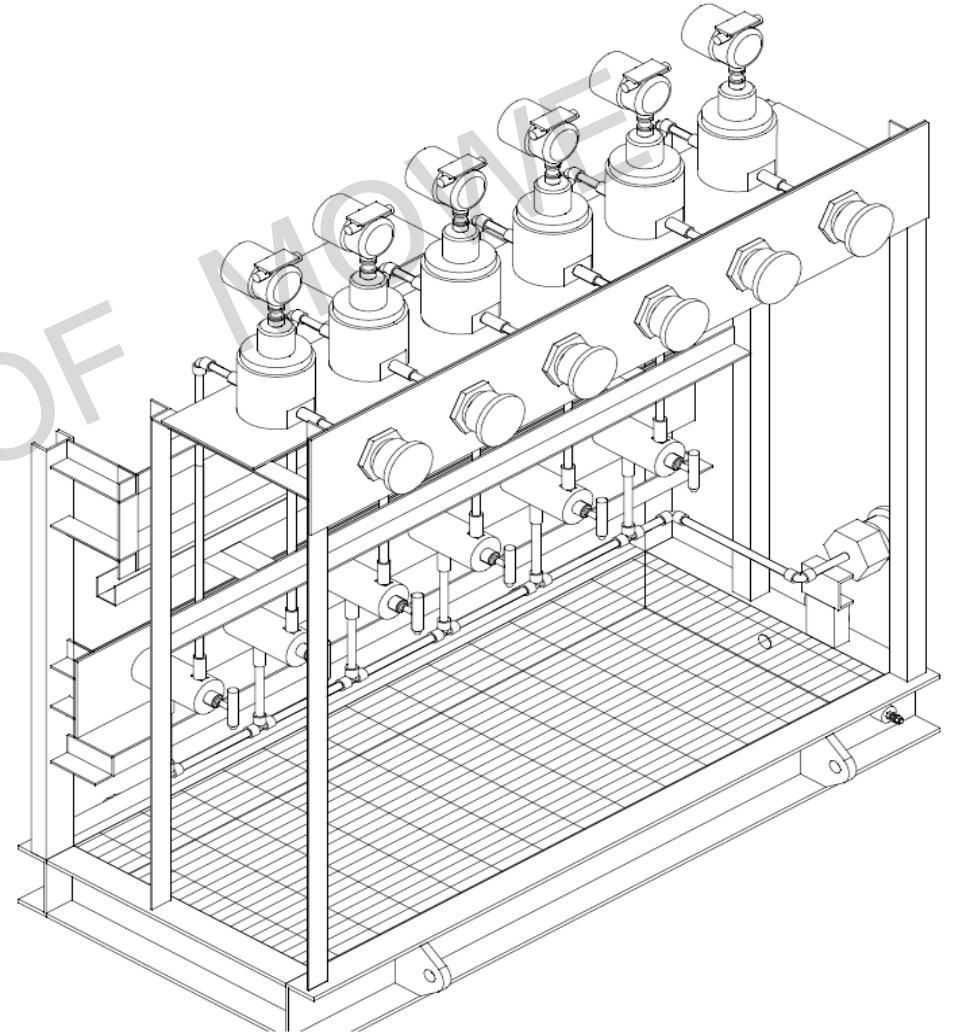
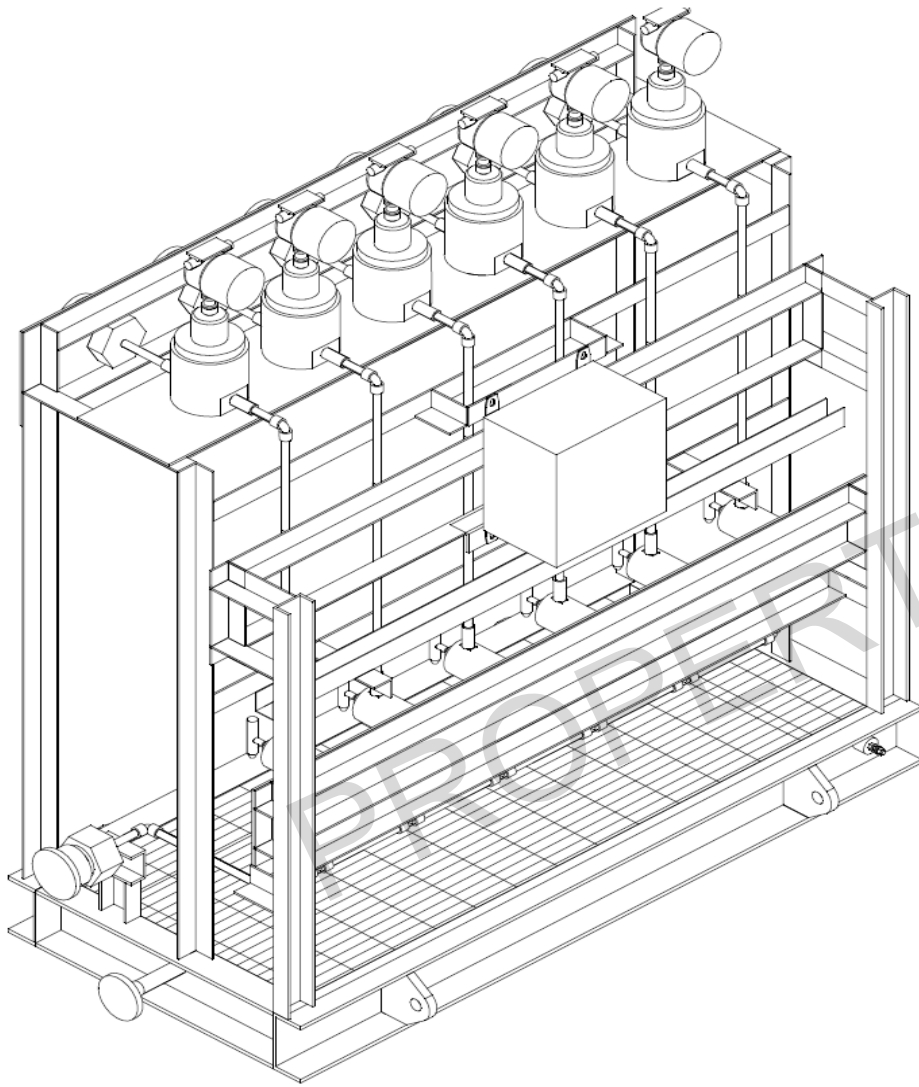
### FLOWMETER SKID - AQ6800C ( 2 / 2 )

- Internals:

Constructed of either Nitronic-60 (anti-galling) or Titanium for the LF03, LF05 & LF15 size to achieve the lowest flow and widest turndown possible. Chambers and rotors are PVD coated. Coatings are applied by physical vapour deposition. A hard metal chromium nitride base layer provides surface hardness and appropriate support for the carbon (WC/C) which is laid over. The WC/C coating provides excellent protection against adhesive wear and its low coefficient of friction reduces the risk of surface fatigue (pitting) and fretting corrosion, vastly improving turndown and low flow capability.



# GA OVERVIEW – AQ6800C FLOWMETER SKID



Local Niche .....Global Reach.....

**CI KINABALU PLATFORM NAG – COMMISSIONING TO BE ADVISED BY CLIENT**







## OUR LOCATIONS

### MOWE Marine & Offshore Pte Ltd

#### Singapore HQ Office

Add: Blk 164 Bukit Merah Central #03-3655. Singapore 150164

Tel: +65 6652 6070

Fax: +65 6652 6071

### MOWE Systems Pte Ltd

#### Branch Company

Address: 120 Lower Delta Road, #09-04, Cendex Center.  
Singapore 169208

Tel: +65 66526070

Email: [info@mowemo.com](mailto:info@mowemo.com)

### MOWE Marine & Offshore Sdn Bhd

#### Branch Factory

Add: No. 15, Jalan Mutiara Emas 5/2,  
Taman Mount Austin, 81100 Johor Malaysi

Tel: +607. 3507711

Fax: +607. 350 7117

Email for enquiry: [info@mowemo.com](mailto:info@mowemo.com), [enquiry@mowemo.com](mailto:enquiry@mowemo.com)

Website: [www.mowemo.com](http://www.mowemo.com)

